

Type 204000



5 mm \varnothing - D = 0,65 mm

Type 204001

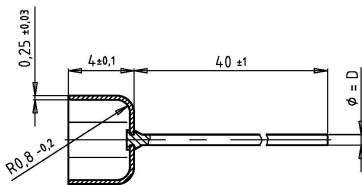


5 mm \varnothing - D = 0,8mm

Type 204002



5 mm \varnothing - D = 1 mm



Aufsteckkappen für G-Sicherungseinsätze mit 5 mm Kappen- \varnothing / Push-on Cap for miniature Fuse-Links with 5 mm cap \varnothing

Bemessungsstrom / rated current

204000: max. 6,3A
204001: max. 10A
204002: max. 16A

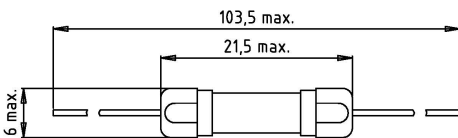
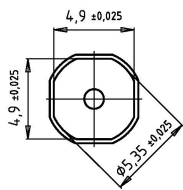
Montage / mounting

Leiterplatte / printed circuit board

Anschlüsse / connections

Axial angeschweisste Drahtenden
 Drahtenden 40 mm, lötbar / axially welded wire-ends of 40 mm, solderable
 Kupferlegierung vernickelt / copper alloy, nickel plated
 Kupfer, verzinkt / copper, tinned

Material Kappen / material contact caps
 Material Drähte / material wire-ends



Type 204100

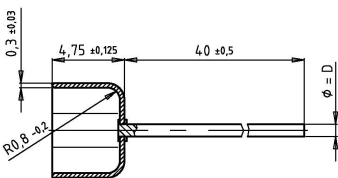


6,3 mm \varnothing - D = 0,8 mm

Type 204101



6,3 mm \varnothing - D = 1 mm



Aufsteckkappen für G-Sicherungseinsätze mit 6,3 mm Kappen- \varnothing / Push-on Cap for miniature Fuse-Links with 6.3 mm cap \varnothing

Bemessungsstrom / rated current

204100: max. 12,5 A
204101: max. 20A

Montage / mounting

Leiterplatte / printed circuit board

Anschlüsse / connections

Axial angeschweisste Drahtenden
 Drahtenden 40 mm, lötbar / axially welded wire-ends of 40 mm, solderable
 Kupferlegierung vernickelt / copper alloy, nickel plated
 Kupfer, verzinkt / copper, tinned

Material Kappen / material contact caps
 Material Drähte / material wire-ends

