

AC Switches - Single-Pole and 3-Way
Industrial Grade 15 Amp, Back and Side Wired

Features - Specifications

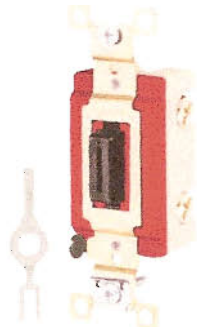
- AC - general use snap switches are designed for controlling as permitted by the NEC, resistive, inductive, tungsten-filament, fluorescent and motor loads for AC branch lighting and appliance circuits
- High impact/chemical resistant nylon toggle
- Extra-wide yoke assures structural integrity, brass and nickel plating to resist corrosion
- Color-coded face indicates ampere rating
- Silver cadmium oxide contacts
- Rivetless one-piece copper-alloy contact arm for excellent conductivity
- Exclusive thermoplastic elastomer rocker and coil compression spring

- Back wiring: clamp-type terminals accept up to #10 wire
- Terminal screws: brass combination Phillips/slotted/Robertson binding head, accepts up to #10 wire
- Grounding connections - green, combination Phillips/slotted/Robertson hex head screw and automatic ground clip
- Approved for CU wire only
- Urea insulating safety barrier
- Strip gauge for accurate back wiring
- Thread cleaning captive combination Phillips/slotted/Robertson mounting screws
- Break-off plaster ears
- UL Listed File #E1464 - Guide #WMUZ

- Verified under Fed Spec. #W-S 896
- CSA Certified File #LR375 - Guide #380-W-19.7
- Complies with UL 20 and NEMA Standard WD-1
- NOM



48011



6006

4801L



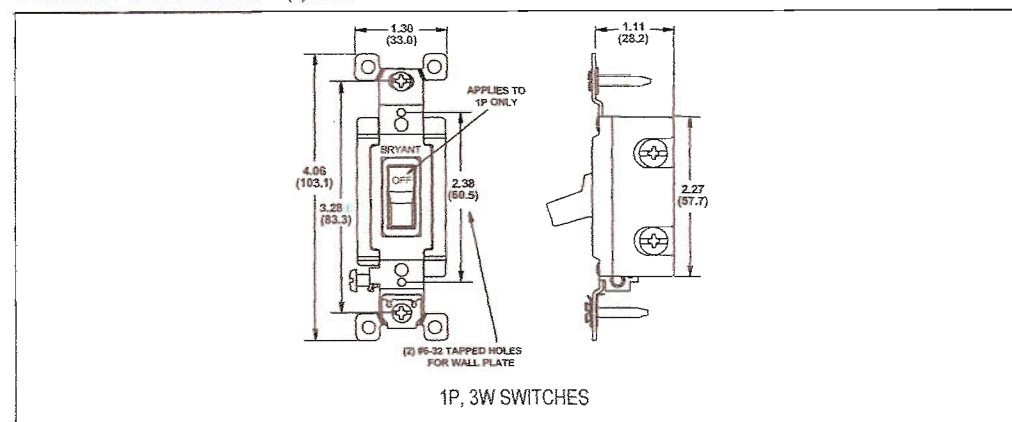
6801

CATALOG NUMBER		DESCRIPTION
15 AMP	15 AMP	
120-277V AC	347V AC ^{①②③}	
4801	---	Single-pole, brown handle
4801BLK	---	Single-pole, black handle
4801C	6801	Single-pole, brown handle w/Robertson head screws
4801GLI ^④	---	Single-pole, ivory glow handle
4801GRY	---	Single-pole, gray handle
4801I	---	Single-pole, ivory handle
4801IC	6801I	Single-pole, ivory handle w/Robertson head screws
4801L	---	Single-pole, lock type
4801LC	6801L	Single-pole, lock type w/Robertson head screws
4801PLR120 ^⑤	---	Single-pole, red pilot handle, 120V
4801RED	---	Single-pole, red handle
4801W	---	Single-pole, white handle
---	6801W	Single-pole, white handle w/Robertson head screws
4803	---	3-way, brown handle
4803BLK	---	3-way, black handle
4803C	6803	3-way, brown handle w/Robertson head screws
4803GLI ^④	---	3-way, ivory glow handle
4803GRY	---	3-way, gray handle
4803I	---	3-way, ivory handle
4803IC	6803I	3-way, ivory handle w/Robertson head screws
4803L	---	3-way, lock type
4803RED	---	3-way, red handle
4803W	---	3-way, white handle
---	6803W	3-way, white handle w/Robertson head screws
6006	---	Key supplied with lock switches

HORSEPOWER RATED

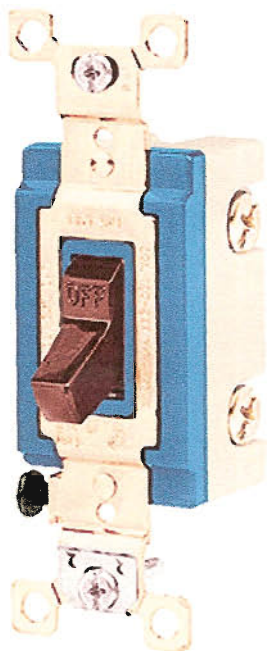
RATING	120V	240V	MAX
15 AMP	1/2 HP	2 HP	12 AMP

PRODUCT DIMENSIONS - () Indicates mm dimensions



- ① 3.53 (89.7) mounting dimension on 347 volt switches.
 - ② Green hex head grounding screw only.
 - ③ CSA certified only.
 - ④ Glow on when switch is "off".
 - ⑤ Pilot on when switch is "on".
- Specifications are subject to change without notice.

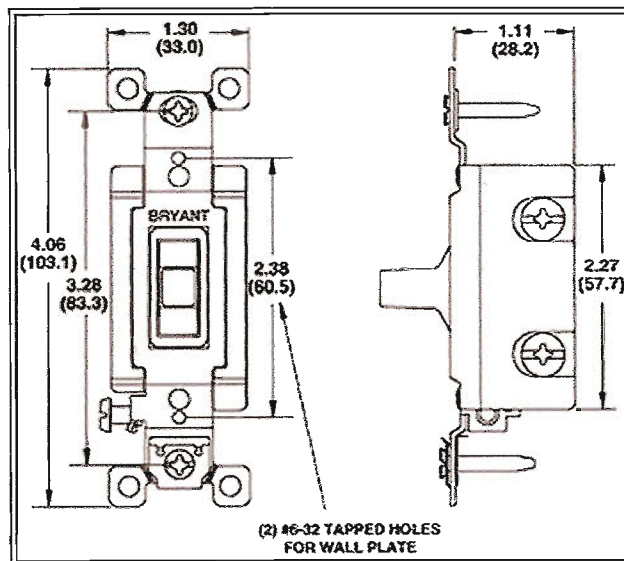
4801 -- Industrial Grade Toggle Switch



Single Pole, 15A, 120/277V AC, Side Wired, Brown

Product Specifications	
Type	General Purpose AC
Grade	Industrial
Actuator	Toggle
Actuator Type	Standard
Switch Contact Type	Single Pole
Amperage	15A
Amperage/Voltage Rating	120/277V AC
Packaging	Single
Color	Brown
Wiring Style	Back & Side Wired
Termination Type	Combo Philips/Slotted/Robertson
Base Material	Thermoset.
Face Material	Thermoset, Color coded by voltage.
Toggle/Actuator Material	Nylon.
Terminals	High Performance Copper Alloy.
Mounting Yoke	Brass and Nickel Plated Steel.
Contacts	Silver Cadmium Oxide.
Movable Contact Arm	High Performance Copper Alloy.
Rocker	Thermoplastic Elastomer.
Ground Terminal	Brass and Nickel Plated Steel.

Terminal Screws	Brass.
Ground Screw	Brass (green).
Auto Ground Clip	Stainless Steel.
Dielectric Voltage	Withstands 1500V Minimum.
Max. Working Voltage	277V AC
Overload	Minimum 4.8 times rated current for 100 cycles.
Temp. Rise	30 deg. C maximum at rated current.
Max. Continuous Current	15A
Endurance	50,000 cycles min., tungsten filament lamp load (Fed. Spec) #WS896E.
Terminal Accomodation	#14 AWG min.- #10 AWG max.
Flammibility	UL 94 V2.
Operating Temperature	Maximum continuous 75 deg. C- Minimum -40 dec. C (w/o impact).
UL Certification	UL Listed, File E1464, Guide #WMUZ.
Federal Specification	Verified under Fed. Spec. #WS896E.
Standards	Complies with UL 20 and NEMA WD-1.
UPC Number	78178662348
Weight in LBs	0.15



BRYANT®